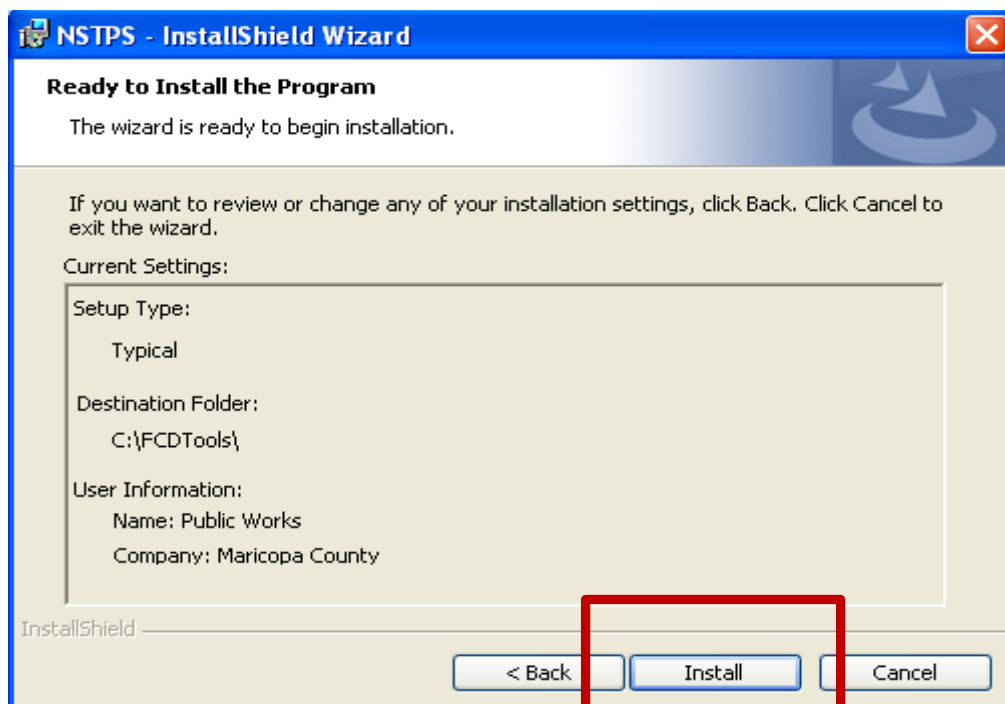


NSTPS PROGRAM INSTALLATION GUIDE

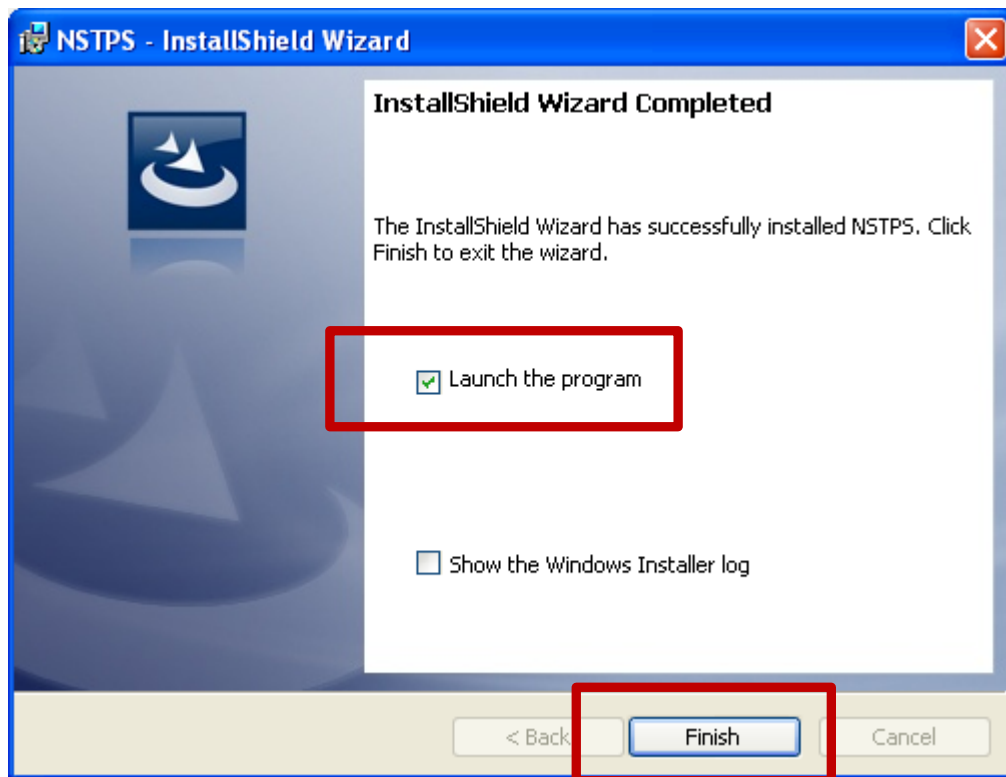
Step 1: Double click the NSTPS Setup file. When the “InstallShield Wizard” dialog box appears, click the “Next >” button.



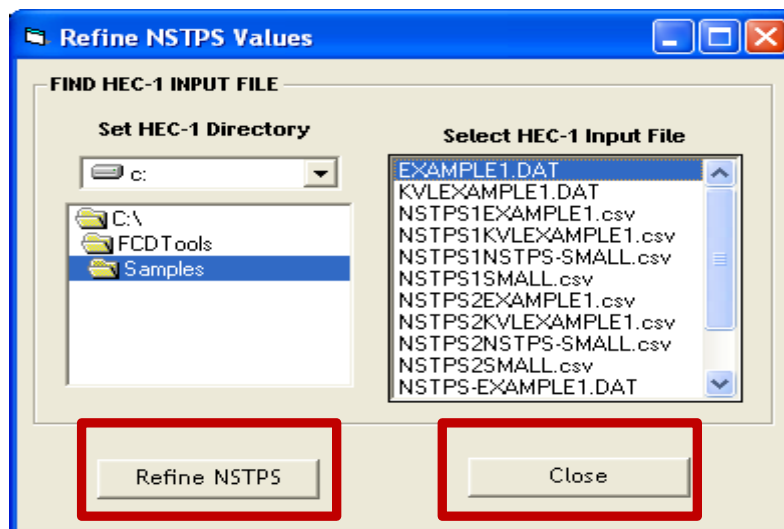
Step 2: When the next dialog box appears, please note the program settings. Click the “Install” button to continue the installation.



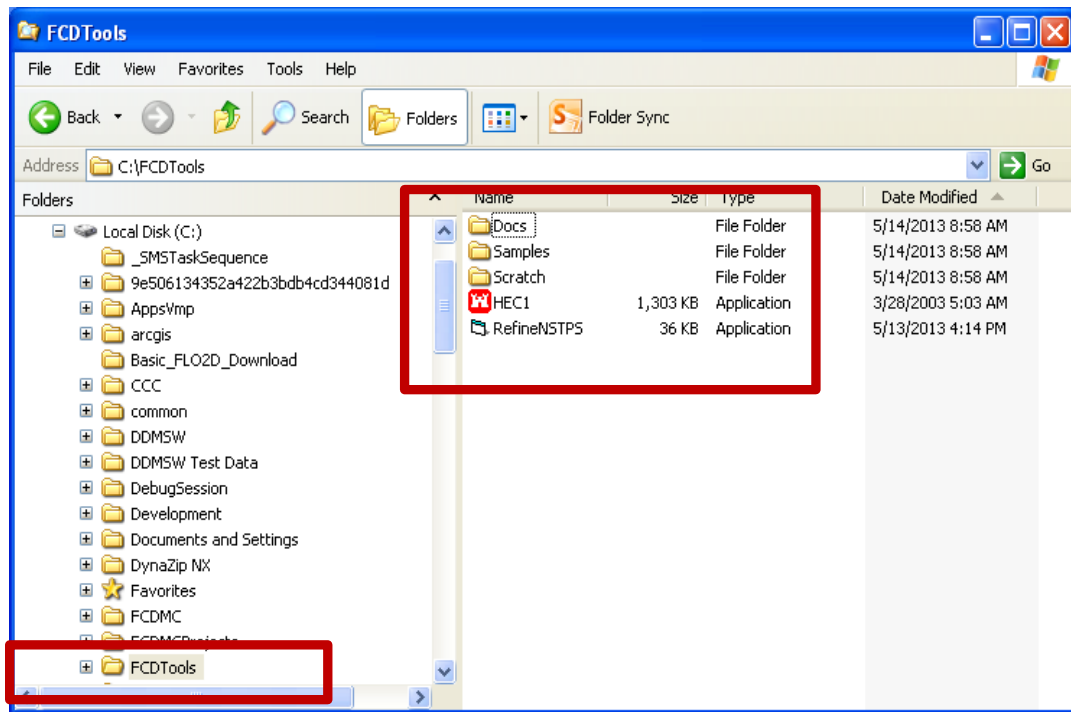
Step 3: Accept all default settings during the program setup. Click “Finish” to complete the installation.



Step 4: After installation, the wizard launches the “Refine NSTPS” program. To run a sample HEC-1 input file using NSTPS, navigate to the “Samples” sub-folder (“C:\FCDTools\Samples\”) and choose one of the *.dat files. Click the “Refine NSTPS” button to execute the program using the selected input file. Select “Close” when finished.



Step 5: Check if the Installation Wizard has installed the program correctly. Go to “C:\FCDTools\”. Three (3) sub-folders should be created (“Docs”, “Samples”, and “Scratch”) and two (2) executable files are saved (“HEC1.exe”, and “RefineNSTPS.exe”).



Please note that the “Docs” subfolder should contain useful documentation regarding the NSTPS Tool. The “Samples” subfolder contains sample HEC-1 input files that are used to test run the NSTPS Tool. The “Scratch” subfolder is used by the program to write scratch files during program execution. The “Scratch” subfolder should not be deleted for any reason.

Step 6: Check if the Installation Wizard has created a desktop shortcut icon of the “RefineNSTPS” program. Please note that the user can run the program by double-clicking the desktop shortcut icon.