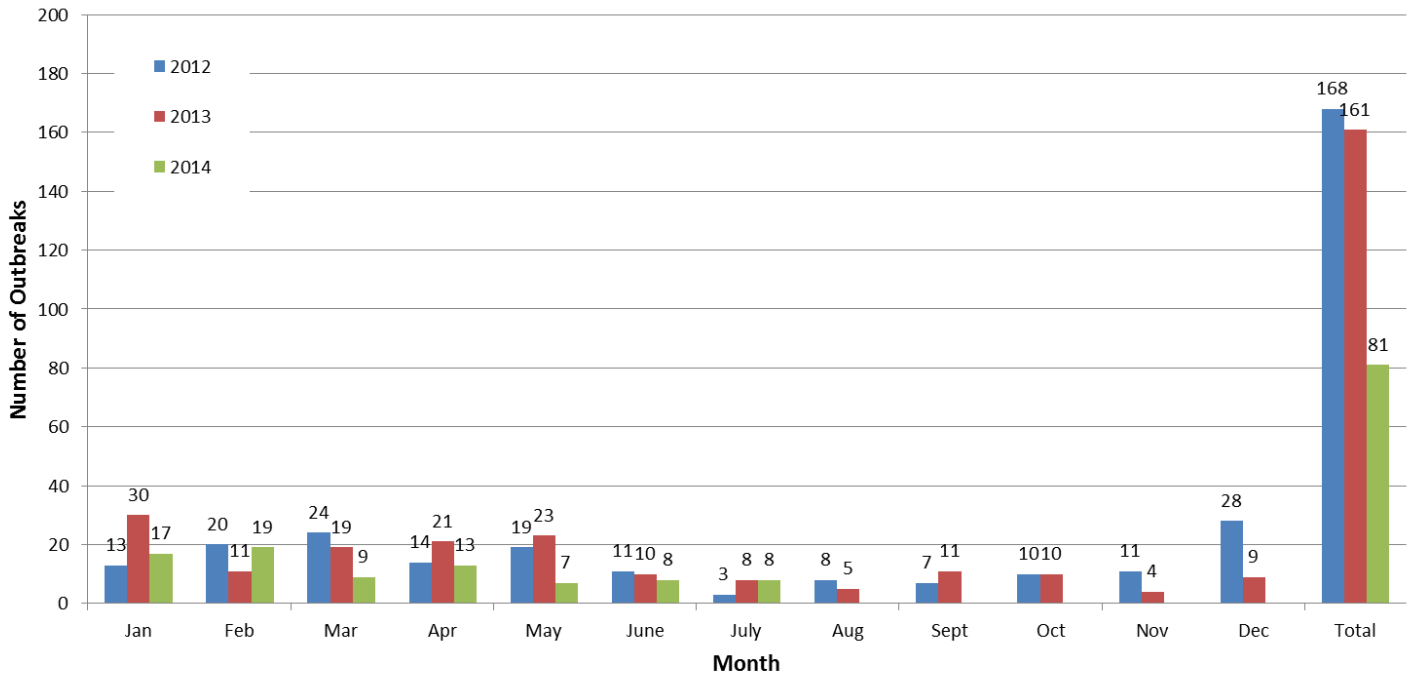


### Outbreaks reported to MCDPH by Month and Year

(note: 2014 OB reports through 07/31/14)



| Outbreaks Reported to Maricopa County Dept of PH |                            |                            |
|--|----------------------------|----------------------------|
|  | 2013<br>through<br>7/31/13 | 2014<br>through<br>7/31/14 |
| <b>Total number of outbreaks</b>                 | 122                        | 81                         |
| <b>Number of outbreaks by type</b>               |                            |                            |
| Gastrointestinal                                 | 57 (47%)                   | 55 (68%)                   |
| Rash   | 26 (21%)                   | 10 (12%)                   |
| Influenza-like illness                           | 28 (23%)                   | 10 (12%)                   |
| Other  | 11 (9%)                    | 6 (7%)                     |
| <b>Number of outbreaks by facility</b>           |                            |                            |
| Restaurant/catering                              | 17 (14%)                   | 9 (11%)                    |
| Senior living                                    | 40 (33%)                   | 22 (27%)                   |
| Hotel/resort                                     | 0 (0%)                     | 1 (1%)                     |
| School/Childcare                                 | 51 (42%)                   | 25 (31%)                   |
| Hospital/HC facility                             | 6 (5%)                     | 5 (6%)                     |
| Other  | 8 (7%)                     | 19 (23%)                   |